

Autumn Newsletter

NEWSLETTER DATE – SEPTEMBER 2025

Download the
Studybugs app
for reporting your
child's absence.

A quick and secure way to report absence due to illness and send messages to school.



Studybugs

Haylands Primary is introducing a new, more efficient and secure system for reporting your child's absence due to illness, called Studybugs.

If you haven't already, please get the free Studybugs app, or register on the Studybugs website, and use it to tell us whenever your child's ill and unable to attend school.

Get the app or register now (<https://studybugs.com/about/parents>)

Studybugs is quick and easy to register and use and automatically reminds you to keep us posted.

You'll be helping the NHS and other public health organisations improve children's health. (<https://>)

School Start Times:

Doors open at **8.30am** and register is taken promptly at **8.40am**.

It is **essential** children are in time for registration and ready to start the day in a timely manner.

School ends at **3.10pm** - please collect promptly.

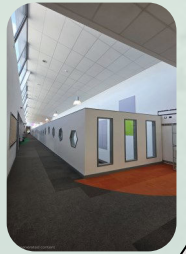
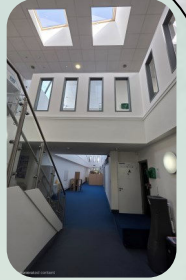


Welcome to a brand new school year!

Welcome to all of our families, new and old. We are excited to begin a fresh new school year with you all. It has been wonderful to welcome our new cohort of Reception and Pre-School children and we hope you have the best journey with us here at Haylands.

We are so proud of our new look in school with the building work being completed over the summer break.

Please be sure to update your contact details with the office if these have changed over the holidays.



IMPORTANT REMINDERS/INFORMATION

- We have a **DEVELOPMENT DAY** next Friday 19th September.
- Please ensure your child has outdoor clothes suitable for the weather - we are seeing children coming to school with no coat even in the poor weather.
- PLEASE do not allow children to arrive at school too early, our gates do not open until 8.30am, please aim to get here for this time.
- Thank you for the wonderful support booking lunches from home during the last academic year - PLEASE continue to help us ensure all children have the lunch they want booked. Keep your eyes peeled for the new menu which will be shared in the coming weeks, this new menu will run from after October Half-term until Easter.
- Playzone (After School Club) is VERY busy and oversubscribed. Please make bookings as far ahead as possible to secure your child's wrap around care. Please cancel sessions prior to the day if the session is no longer needed.
- Our new PTA are doing a wonderful job planning upcoming events, information will be shared on Dojo, keep your eyes peeled.

WE MUST hear from you if your child is absent.

Please call or email school on **563372** or absence@haylands.iow.sch.uk by **9.00am** if your child is absent.

A reason must be provided for the absence or the absence will remain unauthorised.

Reminder - **Quiet Time in the Office** - we have implemented a quiet time in the office from 10.30am until 11.30am daily. If you call the office between these times you will be invited to leave a message. Please do not call the class directly to communicate changes to collection arrangements.



P Permit holders only

If you have or feel you may be entitled to a car park permit, please re-apply/apply for a permit for this academic year. This will need to be done via a paper application from the office. Please be aware, permits are not guaranteed to be renewed as applications are assessed according to the current needs of the school population.

Clubs have been allocated and texts have been sent, you should see this on your scopay account to make payment. If your child did not get a space this time, we will endeavour to ensure they are successful next half half-term.



- Monday - Mindful Colouring 3.15 - 4.00pm
- Tuesday - IT Skills Part 1 3.15 - 4.00pm
- Thursday - KS1 Colouring 3.15 - 4.00pm

Key Dates -2024/2025

- Fri 19th Sept - Development Day
- Fri 17th Oct - Break up for Half Term
- Mon 3rd Nov - Return to School
- Tues 4th Nov - School Photo's
- Weds 5th Nov - School Photo's
- Fri 19th Dec - Christmas Carol Concert
- Fri 19th Dec - Break up for Christmas Holidays
- Mon 5th Jan - Return to School

School Meals

School dinners are provided by Chartwells. The cost is £3.20 per day.

The Spring/Summer Menu will run until **October Half Term**



Spring/Summer School Dinner Menu

SPRING/SUMMER 2025 MENU



WEEK 1

W/C: 21/04/2025, 12/05/2025, 09/06/2025, 30/06/2025, 21/07/2025, 08/09/2025, 29/09/2025

| | | MONDAY | TUESDAY | WEDNESDAY | THURSDAY | FRIDAY |
|--|-----------------|---|---|--|---|---|
| HOT DISHES | OPTION 1 | Cheese and Tomato Pizza Served with Potato Wedges ✓ | BBQ Chicken Served with Rainbow Rice | Roast Pork Served with Roast Potatoes and Gravy | Classic Beef Burger Served with Potato Wedges | Battered Fish Served with Chips |
| | OPTION 2 | Cheesy Bean Tortilla Toastie Served with Potato Wedges ✓ | Macaroni Cheese ✓ | Butternut Squash and Tomato Bake Served with Roast Potatoes and Gravy ✓ | Quorn Burger Served with Potato Wedges ✓ | Veggie Fingers Served with Chips ✓ |
| | OPTION 3 | Tomato Pasta Fresh, Homemade Tomato Sauce with Pasta ✓ | Tomato Pasta Fresh, Homemade Tomato Sauce with Pasta ✓ | Tomato Pasta Fresh, Homemade Tomato Sauce with Pasta ✓ | Tomato Pasta Fresh, Homemade Tomato Sauce with Pasta ✓ | Tomato Pasta Fresh, Homemade Tomato Sauce with Pasta ✓ |
| HOT DISHES ARE SERVED WITH TWO VEGETABLES AND FRESHLY BAKED BREAD | | | | | | |
| DELI DISHES | OPTION 4 | Ham or Tuna Baguette | Ham or Tuna Baguette | Ham or Tuna Baguette | Ham or Tuna Baguette | Ham or Tuna Baguette |
| | OPTION 5 | Cheese Baguette ✓ | Cheese Baguette ✓ | Cheese Baguette ✓ | Cheese Baguette ✓ | Cheese Baguette ✓ |
| DELI DISHES ARE SERVED WITH MIXED SALAD | | | | | | |
| DESSERT | | Chocolate Brownie ✓ | Fruits of the Forest Jelly | Banoffee Pie | Strawberry Ice Cream | Ginger Biscuit with Fruit |

BAKED POTATOES SERVED DAILY
With a choice of toppings ✓

AVAILABLE DAILY
Fresh fruit, salad, yoghurt and water



- Vegetarian
- Vegan
- Oily Fish
- Wholegrain
- Fruity!
- Nutritionist's Choice

Our menu is subject to change. Please be assured that all notified medical diets and allergy requirements will be safely catered for.

SPRING/SUMMER 2025 MENU



WEEK 2

W/C: 28/04/2025, 19/05/2025, 16/06/2025, 07/07/2025, 28/07/2025, 15/09/2025, 06/10/2025

| | | MONDAY | TUESDAY | WEDNESDAY | THURSDAY | FRIDAY |
|---|----------|---|--|---|--|--|
| HOT DISHES | OPTION 1 | Macaroni Cheese ✓ | BBQ Chicken Pizza Served with Potato Wedges | Roast Gammon Served with Roast Potatoes and Gravy | Beef Bolognese Served with Wholewheat Pasta ♥♥ | Fish Fingers Served with Chips |
| | OPTION 2 | Sweet Potato and Lentil Curry Served with Wholegrain Rice ✓ ♥ | Meatless Feast Cheesy Pizza Served with Potato Wedges ✓ | Sweet Potato, Chickpea and Herb Roast Served with Roast Potatoes and Gravy ✓ | Vegetable Fajita Wrap ♥✓♥ | Quorn Dippers Served with Chips ✓ |
| | OPTION 3 | Tomato Pasta Fresh, Homemade Tomato Sauce with Pasta ✓♥ | Tomato Pasta Fresh, Homemade Tomato Sauce with Pasta ✓♥ | Tomato Pasta Fresh, Homemade Tomato Sauce with Pasta ✓♥ | Tomato Pasta Fresh, Homemade Tomato Sauce with Pasta ✓♥ | Tomato Pasta Fresh, Homemade Tomato Sauce with Pasta ✓♥ |
| HOT DISHES ARE SERVED WITH TWO VEGETABLES AND FRESHLY BAKED BREAD | | | | | | |
| DELI DISHES | OPTION 4 | Ham or Tuna Baguette | Ham or Tuna Baguette | Ham or Tuna Baguette | Ham or Tuna Baguette | Ham or Tuna Baguette |
| | OPTION 5 | Cheese Baguette ✓ | Cheese Baguette ✓ | Cheese Baguette ✓ | Cheese Baguette ✓ | Cheese Baguette ✓ |
| DELI DISHES ARE SERVED WITH MIXED SALAD | | | | | | |
| DESSERT | | Apple and Golden Syrup Cake ✓ | Strawberry Jelly | Flapjack with Fruit ✓ | Chocolate Ice Cream | Lemon Cake |

BAKED POTATOES SERVED DAILY
With a choice of toppings ✓♥🐟

AVAILABLE DAILY
Fresh fruit, salad, yoghurt and water



✓ Vegetarian ♥ Vegan 🐟 Oily Fish 🌾 Wholegrain 🍏 Fruity! ♥ Nutritionist's Choice

Our menu is subject to change. Please be assured that all notified medical diets and allergy requirements will be safely catered for.

SPRING/SUMMER 2025 MENU



WEEK 3

W/C: 05/05/2025, 02/06/2025, 23/06/2025, 14/07/2025, 01/09/2025, 22/09/2025, 13/10/2025

| | | MONDAY | TUESDAY | WEDNESDAY | THURSDAY | FRIDAY |
|---|----------|---|--|--|--|--|
| HOT DISHES | OPTION 1 | Cheese and Tomato Pizza Served with Wholewheat Pasta ♥✓ | Sausage Hot Dog Served with Potato Wedges | Roast Chicken Served with Roast Potatoes and Gravy | Oat Crusted Chicken Served with Wholegrain Rice ♥ | Fish Fingers Served with Chips |
| | OPTION 2 | Chilli No Carne With Crispy Tortilla Served with Wholegrain Rice ♥ ♥✓ | Veggie Sausage Hot Dog Served with Potato Wedges ✓ | Roast Quorn Served with Roast Potatoes and Gravy ✓ | Meatless Shepherd's Pie Served with Gravy ✓♥ | Quorn Dippers Served with Chips ✓ |
| | OPTION 3 | Tomato Pasta Fresh, Homemade Tomato Sauce with Pasta ✓♥ | Tomato Pasta Fresh, Homemade Tomato Sauce with Pasta ✓♥ | Tomato Pasta Fresh, Homemade Tomato Sauce with Pasta ✓♥ | Tomato Pasta Fresh, Homemade Tomato Sauce with Pasta ✓♥ | Tomato Pasta Fresh, Homemade Tomato Sauce with Pasta ✓♥ |
| HOT DISHES ARE SERVED WITH TWO VEGETABLES AND FRESHLY BAKED BREAD | | | | | | |
| DELI DISHES | OPTION 4 | Ham or Tuna Baguette | Ham or Tuna Baguette | Ham or Tuna Baguette | Ham or Tuna Baguette | Ham or Tuna Baguette |
| | OPTION 5 | Cheese Baguette ✓ | Cheese Baguette ✓ | Cheese Baguette ✓ | Cheese Baguette ✓ | Cheese Baguette ✓ |
| DELI DISHES ARE SERVED WITH MIXED SALAD | | | | | | |
| DESSERT | | Flapjack | Peach and Ginger Pudding ✓ | Oatie Cookie with Fruit ✓ | Vanilla Ice Cream | Crunchy Chocolate Mousse |

BAKED POTATOES SERVED DAILY
With a choice of toppings ✓♥🐟

AVAILABLE DAILY
Fresh fruit, salad, yoghurt and water



✓ Vegetarian ♥ Vegan 🐟 Oily Fish 🌾 Wholegrain 🍏 Fruity! ♥ Nutritionist's Choice

Our menu is subject to change. Please be assured that all notified medical diets and allergy requirements will be safely catered for.

For Parents



STAFF DEVELOPMENT DAY

Isle of Wight School Terms And Holidays 2025 – 2026

Determined programme of school term and holiday dates for county and controlled schools for the academic year 2025/26

| SEPTEMBER 2025 | | | | | |
|----------------|---|----|----|----|----|
| M | ★ | 8 | 15 | 22 | 29 |
| T | 2 | 9 | 16 | 23 | 30 |
| W | 3 | 10 | 17 | 24 | |
| T | 4 | 11 | 18 | 25 | |
| F | 5 | 12 | ★ | 26 | |
| S | 6 | 13 | 20 | 27 | |
| S | 7 | 14 | 21 | 28 | |

| OCTOBER 2025 | | | | | |
|--------------|---|----|-----|----|----|
| M | 6 | 13 | 20 | 27 | |
| T | 7 | 14 | 21 | 28 | |
| W | 1 | 8 | 15 | 22 | 29 |
| T | 2 | 9 | 16 | 23 | 30 |
| F | 3 | 10 | 17# | 24 | 31 |
| S | 4 | 11 | 18 | 25 | |
| S | 5 | 12 | 19 | 26 | |

| NOVEMBER 2025 | | | | | |
|---------------|----|----|----|----|----|
| M | 3* | 10 | 17 | 24 | |
| T | 4 | 11 | 18 | 25 | |
| W | 5 | 12 | 19 | 26 | |
| T | 6 | 13 | 20 | 27 | |
| F | 7 | 14 | 21 | 28 | |
| S | 1 | 8 | 15 | 22 | 29 |
| S | 2 | 9 | 16 | 23 | 30 |

| DECEMBER 2025 | | | | | |
|---------------|---|----|-----|----|----|
| M | 1 | 8 | 15 | 22 | 29 |
| T | 2 | 9 | 16 | 23 | 30 |
| W | 3 | 10 | 17 | 24 | 31 |
| T | 4 | 11 | 18 | 25 | |
| F | 5 | 12 | 19# | 26 | |
| S | 6 | 13 | 20 | 27 | |
| S | 7 | 14 | 21 | 28 | |

| JANUARY 2026 | | | | | |
|--------------|----|----|----|----|----|
| M | 5* | 12 | 19 | 26 | |
| T | 6 | 13 | 20 | 27 | |
| W | 7 | 14 | 21 | ★ | |
| T | 1 | 8 | 15 | 22 | 29 |
| F | 2 | 9 | 16 | 23 | 30 |
| S | 3 | 10 | 17 | 24 | 31 |
| S | 4 | 11 | 18 | 25 | |

| FEBRUARY 2026 | | | | | |
|---------------|---|-----|----|-----|--|
| M | 2 | 9 | 16 | 23* | |
| T | 3 | 10 | 17 | 24 | |
| W | 4 | 11 | 18 | 25 | |
| T | 5 | 12 | 19 | 26 | |
| F | 6 | 13# | 20 | 27 | |
| S | 7 | 14 | 21 | 28 | |
| S | 1 | 8 | 15 | 22 | |

| MARCH 2026 | | | | | |
|------------|---|----|----|-----|----|
| M | 2 | 9 | 16 | 23 | 30 |
| T | 3 | 10 | 17 | 24 | 31 |
| W | 4 | 11 | 18 | 25 | |
| T | 5 | 12 | 19 | 26 | |
| F | 6 | 13 | 20 | 27# | |
| S | 7 | 14 | 21 | 28 | |
| S | 1 | 8 | 15 | 22 | 29 |

| APRIL 2026 | | | | | |
|------------|---|-----|----|----|----|
| M | 6 | 13* | 20 | 27 | |
| T | 7 | 14 | 21 | 28 | |
| W | 1 | 8 | 15 | 22 | 29 |
| T | 2 | 9 | 16 | 23 | 30 |
| F | 3 | 10 | 17 | 24 | |
| S | 4 | 11 | 18 | 25 | |
| S | 5 | 12 | 19 | 26 | |

| MAY 2026 | | | | | |
|----------|---|----|----|-----|----|
| M | 4 | 11 | 18 | 25 | |
| T | 5 | 12 | 19 | 26 | |
| W | 6 | 13 | 20 | 27 | |
| T | 7 | 14 | 21 | 28 | |
| F | 1 | 8 | 15 | 22# | 29 |
| S | 2 | 9 | 16 | 23 | 30 |
| S | 3 | 10 | 17 | 24 | 31 |

| JUNE 2026 | | | | | |
|-----------|----|----|----|----|----|
| M | 1* | 8 | 15 | ★ | 29 |
| T | 2 | 9 | 16 | 23 | 30 |
| W | 3 | 10 | 17 | 24 | |
| T | 4 | 11 | 18 | 25 | |
| F | 5 | 12 | 19 | 26 | |
| S | 6 | 13 | 20 | 27 | |
| S | 7 | 14 | 21 | 28 | |

| JULY 2026 | | | | | |
|-----------|---|----|----|----|----|
| M | 6 | 13 | 20 | ★# | |
| T | 7 | 14 | 21 | 28 | |
| W | 1 | 8 | 15 | 22 | 29 |
| T | 2 | 9 | 16 | 23 | 30 |
| F | 3 | 10 | 17 | 24 | 31 |
| S | 4 | 11 | 18 | 25 | |
| S | 5 | 12 | 19 | 26 | |

| AUGUST 2026 | | | | | |
|-------------|---|----|----|----|----|
| M | 3 | 10 | 17 | 24 | 31 |
| T | 4 | 11 | 18 | 25 | |
| W | 5 | 12 | 19 | 26 | |
| T | 6 | 13 | 20 | 27 | |
| F | 7 | 14 | 21 | 28 | |
| S | 1 | 8 | 15 | 22 | 29 |
| S | 2 | 9 | 16 | 23 | 30 |



Lift Ryde

Lift Ryde Open Evening

October 8th 4:00pm - 7:00pm

Parent Presentations 4:30pm and 5:30pm



Medina College

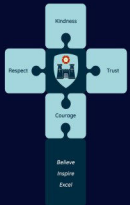
YEAR 6 OPEN EVENING

Meet our students, talk to our staff, tour the school and see our curriculum in action!



Tuesday 23 September 2025 5.00 - 8.00 pm

www.medina.iow.sch.uk



THE BAY CE SCHOOL
Believe · Inspire · Excel



Year 7 Open Evening

Thursday 2nd October 2025, 5.00-7.30pm

Presentation at 5.00pm and 6.00pm followed by tours of the Secondary School

Open Morning: Tuesday 7th October, 9.00-11.00am, please call to book an appointment.



Contact us for more information: Telephone: 01983 403284

Email: office@bayceschool.org

Website: bayceschool.org



Carisbrooke College

YEAR 6 OPEN EVENING

Monday 29 September 2025 5.00 - 8.00 pm

Please join us for

- a short presentation, repeated at 5.15, 6.00 and 6.45 pm
- tours of the school
- opportunities to meet staff (including SEND) and current students
- Subject demonstrations

Please visit our website for more details: www.carisbrooke.iow.sch.uk



The Footprint Trust

Riverside Centre, Newport
10am - 1pm

16th October 2025

WINTER IS COMING

Free Help Event

- ENERGY
- HOUSING
- EMPLOYMENT
- FOOD
- BENEFITS
- HEALTH
- FAMILIES

ISORROPIA
EMBRACING AGE
HEALTHWATCH
SOUTHERN HOUSING
VETERANS OUTREACH
SUPPORT

STOREROOM
SOUTHERN WATER
FOOTPRINT TRUST

LIVING WELL
COST OF LIVING
PAN TOGETHER
PARAGON
PLYLE STREET PANTRY



CONTACT THE FOOTPRINT TRUST FOR MORE INFORMATION:
01983 82 22 82 OR INFO@FOOTPRINT-TRUST.CO.UK



PACT

PARENTS AND CARERS TOGETHER

Getting ready for school and Home Learning Environment

Cowes Family Centre, Love
Lane, Cowes, PO31 7ET
Tuesday 16 September 2025,
12pm until 2pm



All attendees who complete the survey on the day will receive a £10 Shopping Voucher via email after the event OR if you are unable to attend on the day, scan the QR code to complete the survey and be entered into a prize draw to win a £20 shopping voucher.

Is your child starting school in September 2026? Come along and speak to one of our subject experts to find out how you can help prepare them for this

Join us for Rhyme Time Fun and Sparkles Galore — With Songs, and Glitter Tattoos to Adore!



Scan the QR code to complete the Survey
<https://forms.office.com/e/gsuNtkjzct>



STAY SMART ONLINE!

Safe

Keep all of your personal information safe.

Tell

Tell a responsible adult if you feel worried or uncomfortable.

Meet

Don't meet up with strangers you have talked to online.

Accept

Think before you accept anything online.

Reliable

Not everyone is reliable. They may not be who they seem to be.



FOR PARENTS



[CEOP Police](#) - Report online abuse



[Internet Matters](#) - Information, Advice and Support to Keep Children Safe Online



[NSPCC Net Aware](#) - Parents guide to the social networks your kids use



[Share Aware](#) - Video about sharing information on the internet



The experts in digital family life

[Parent Zone](#) - Parent Zone is devoted to providing expert information to

families and schools



[Think you Know](#) - Protecting your children from abuse online



[UK Safer Internet Centre](#) - Tips, advice, guides and resources to help keep your child safe on the internet

[Free Internet Safety Resources](#) - A list of our resources you can access for free which provide information and advice for parents about internet safety.